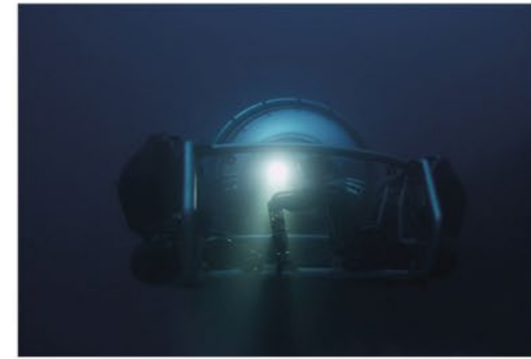




EXPLORE THE DEEP

submersibles product overview



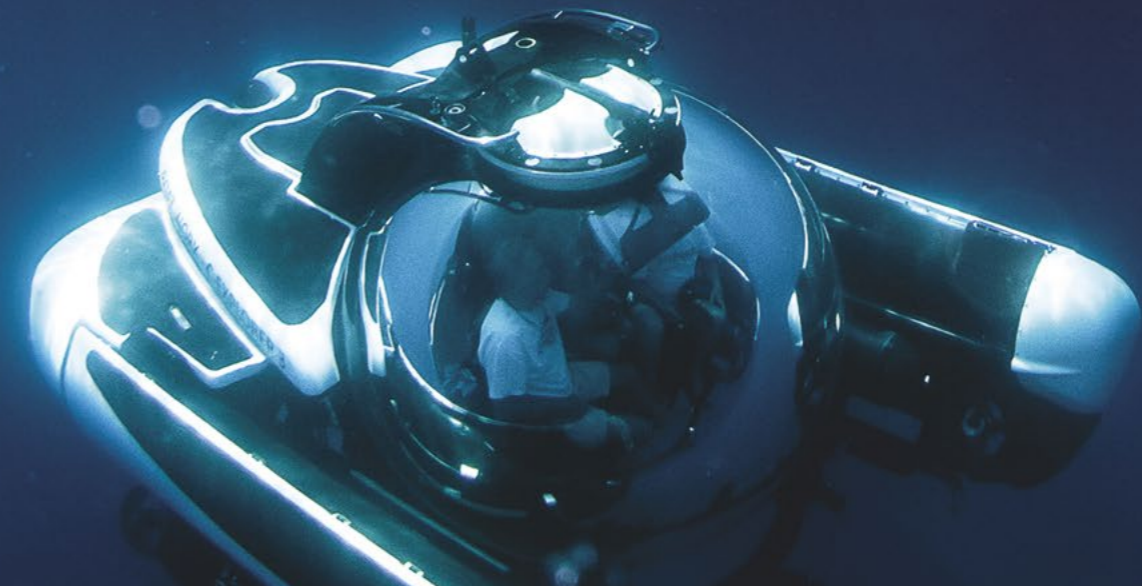


A NEW HORIZON

For centuries mankind has explored and conquered the surface of our oceans. More recently we have begun doing the same in the wondrous world beneath the waves. Owning a U-Boat Worx submersible makes exploring the depths of the uncharted subsea realm an effortless pleasure.

When boarding our submersibles you step into one of the most private and luxurious places in the world. When your dive commences you will be completely

surrounded by the ocean while enjoying the luxury and safety of a one-atmospheric environment, making you want to stay submerged for hours. Then out of the shimmering depths shapes start to appear. The pilot hands you the MANTA controller allowing you to set a course to the contours on the horizon. With 90% of the oceans still unexplored, you have embarked on a voyage of discovery to find reefs, drop-offs to the dark depths, unique marine life, shipwrecks and underwater hills and valleys.

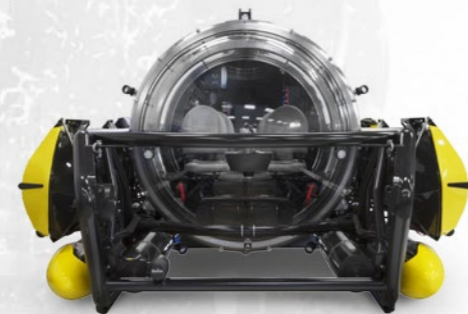


A HERITAGE INSPIRED BY EXPLORERS

It's human nature to satisfy our curiosity even at 1,700 meters below the surface. Since time immemorial, mankind has attempted to discover and conquer the underwater world. The first records of these attempts date back before the time of Christ, to the time of the Assyrian. After them the Romans and the Greeks tried. It was Leonardo da Vinci who made the first-known mention of air tanks and even designed the first diving bell.

In 1620 Dutchman Cornelis Drebbel invented the first submarine that actually worked. The submarine could submerge for three hours and travel from Westminster to Greenwich and back. In 1960 Jacques Piccard and Don Walsh reached a depth of 35,798 feet in the Marianna Trench. So far only James Cameron has followed in their footsteps.

Now it is your time to become an explorer of the subsea realm. With your own U-Boat Worx submersible you too can conquer the underwater world.



ABOUT U-BOAT WORX

At U-Boat Worx we do everything possible to give you the best and safest diving experience possible. Since our start in 2005 we have grown to become the largest private submersible builder in the world. Our large fleet consists of nine different models, and has changed the standards for private submersibles.

Each U-Boat Worx submersible is engineered and built to the highest standards. Leading Classification Society DNV-GL individually classes each submersible by extensively testing each component. It is our innovation and in-house engineering that have led to many "world-firsts" and achievements that illustrate how our owners explore with the best submersibles.

We are the only submersible manufacturer who builds in series. The benefits of this approach are straightforward. Our customers enjoy the best quality, highest reliability and design at industry-defining prices. The engineers and technicians in our Netherlands-based factory take individual care of each submersible assuring the highest level of precision and craftsmanship, to provide customized solutions for a particular mission or a bespoke design.

It is the quality of our submersibles and the dedication of the team that makes a U-Boat Worx submersible the best choice for everyone involved, from the owner and his guests, to the crew and operator. Let us introduce you to our range of submersible models on the following pages.





Specifications HiPer Sub 2		
Occupants	Pilot	1
	Passengers	1
Depth-rating	100 meters	
Dimensions	285 x 235 x 136 cm	
Weight	2,200 kg	
Lifting points	4 lifting points	
Certification	DNV-GL	
Endurance	Up to 6 hours	
Battery type	Lithium-ion	
Underwater speed	6.5 knots	
Surface speed	6 knots	

HIPER SUB 2

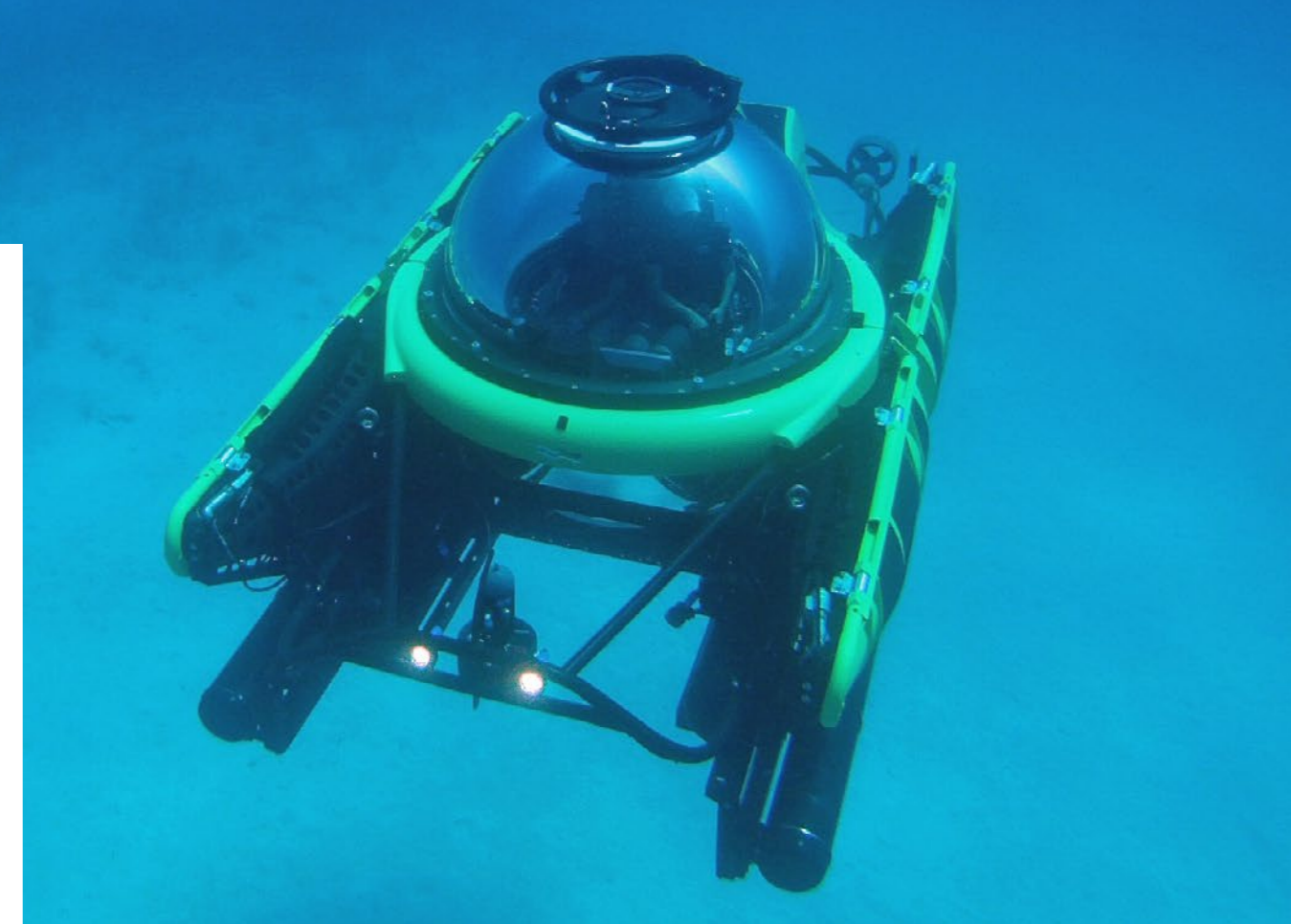
The fastest two-person private submersible available. Fly underwater in any direction you want, at any angle you desire. The hydrodynamic hull gives you minimum drag and maximum manoeuvrability. The small size and low weight makes this submersible perfect for your yacht or for launching with a trailer. You can make a statement of your personal style with this craft through our bespoke design program.

“Unrivalled intuitive controls”

C-EXPLORER 2

This robust submersible is capable of taking two persons to a depth of 100 meters. Get close to the action with the large acrylic sphere that offers a view in all directions. The versatility and modularity of the C-Explorer 2 make it the ultimate submersible for oceanographic activities.

Specifications C-Explorer 2		
Occupants	Pilot	1
	Passengers	1
Depth-rating	100 meters	
Dimensions	431 x 245 x 207 cm	
Weight	3,484 kg	
Lifting points	4 lifting points	
Certification	DNV-GL	
Endurance	Up to 8 hours	
Battery type	Lithium-ion	
Underwater speed	3 knots	
Surface speed	4 knots	





SUPER YACHT SUB 3

Unique by its small size and low weight, the Super Yacht Sub 3 is purposely designed to be operated from yachts. This extraordinary submersible has a remarkably spacious interior with a luxurious finish worthy of every yacht owner. Everyone can navigate the Super Yacht Sub 3 with the intuitive MANTA controller under supervision of the pilot.

“Unparalleled comfort”

Specifications Super Yacht sub 3

Occupants	Pilot	1
	Passengers	2
Depth-rating	100 / 200 / 300 meters	
Dimensions	320 x 244 x 173 cm	
Weight	3,800 kg	
Lifting points	Single Lifting Point, Flexible Lifting Points	
Certification	DNV-GL	
Endurance	Up to 6 hours	
Battery type	Lithium-ion	
Underwater speed	2.8 knots	
Surface speed	2.8 knots	



C-EXPLORER 3

Enjoy a 360 degree panoramic view during your dive. The characteristic acrylic sphere gives you the best view possible. The large interior of the C-Explorer 3 offers the finest leather seating for three persons. Enjoy your adventures in unparalleled comfort, while you explore the oceans to depths of 300 meters.

Specifications C-Explorer 3

Occupants	Pilot	1
	Passengers	2
Depth-rating	300 meters	
Dimensions	423 x 321 x 233 cm	
Weight	5,970 kg	
Lifting points	Single lifting point	
Certification	DNV-GL	
Endurance	Up to 16 hours	
Battery type	Lithium-ion	
Underwater speed	4 knots	
Surface speed	3 knots	





C-RESEARCHER 3

For those who seek adventure at extreme depth we have the C-Researcher 3. The impressive acrylic sphere gives your dive to 1,700 meters an unmatched view. The latest technology is used to make diving easy. The C-Researcher 3 can be equipped with a wide array of tools, making it the most versatile submersible available and perfect for any mission.

“Dive anywhere to the maximum depth”

Specifications C-Researcher 3

Occupants	Pilot	1
	Passengers	2
Depth-rating		1,700 meters
Dimensions		450 x 260 x 245 cm
Weight		8,000 kg
Lifting points		Single lifting point
Certification		DNV-GL
Endurance		Up to 12 hours
Battery type		Lithium-ion
Underwater speed		3 knots
Surface speed		3 knots



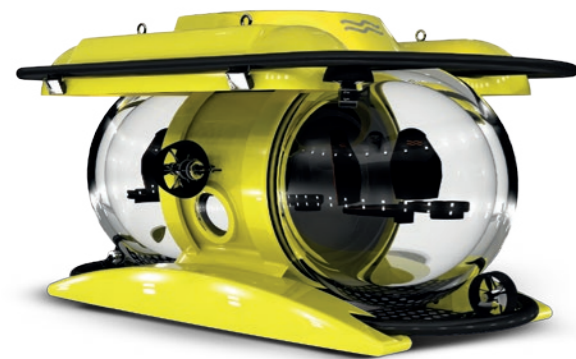
C-EXPLORER 5

The world's first subsea limousine. The 360 acrylic pressure hull offers the best view for everyone. With the ability to take five persons on a dive you now can take your friends or family with you during your dive. Take turns in steering the submersible with the MANTA controller or sit back and enjoy the wonders of the sea together.

Specifications C-Explorer 5

Occupants	Pilot	1
	Passengers	4
Depth-rating		200 meters
Dimensions		515 x 300 x 227 cm
Weight		7,250 kg
Lifting points		Single lifting point
Certification		DNV-GL
Endurance		Up to 16 hours
Battery type		Lithium-ion
Underwater speed		3 knots
Surface speed		4 knots





Cruise Sub 5



Cruise Sub 7 - 300



Cruise Sub 7 - 1140



Cruise Sub 9

“Technology that allows you to focus on the outside”

Specifications Cruise Sub 5 - 300		
Occupants	Pilot	1
	Passengers	4
Depth-rating	300 meters	
Dimensions	415 x 285 x 225 cm	
Weight	7,400 kg	
Lifting points	4 lifting points	
Certification	DNV-GL	
Endurance	Up to 12 hours	
Battery type	Lithium-ion	
Underwater speed	2.5 knots	
Surface speed	2.5 knots	

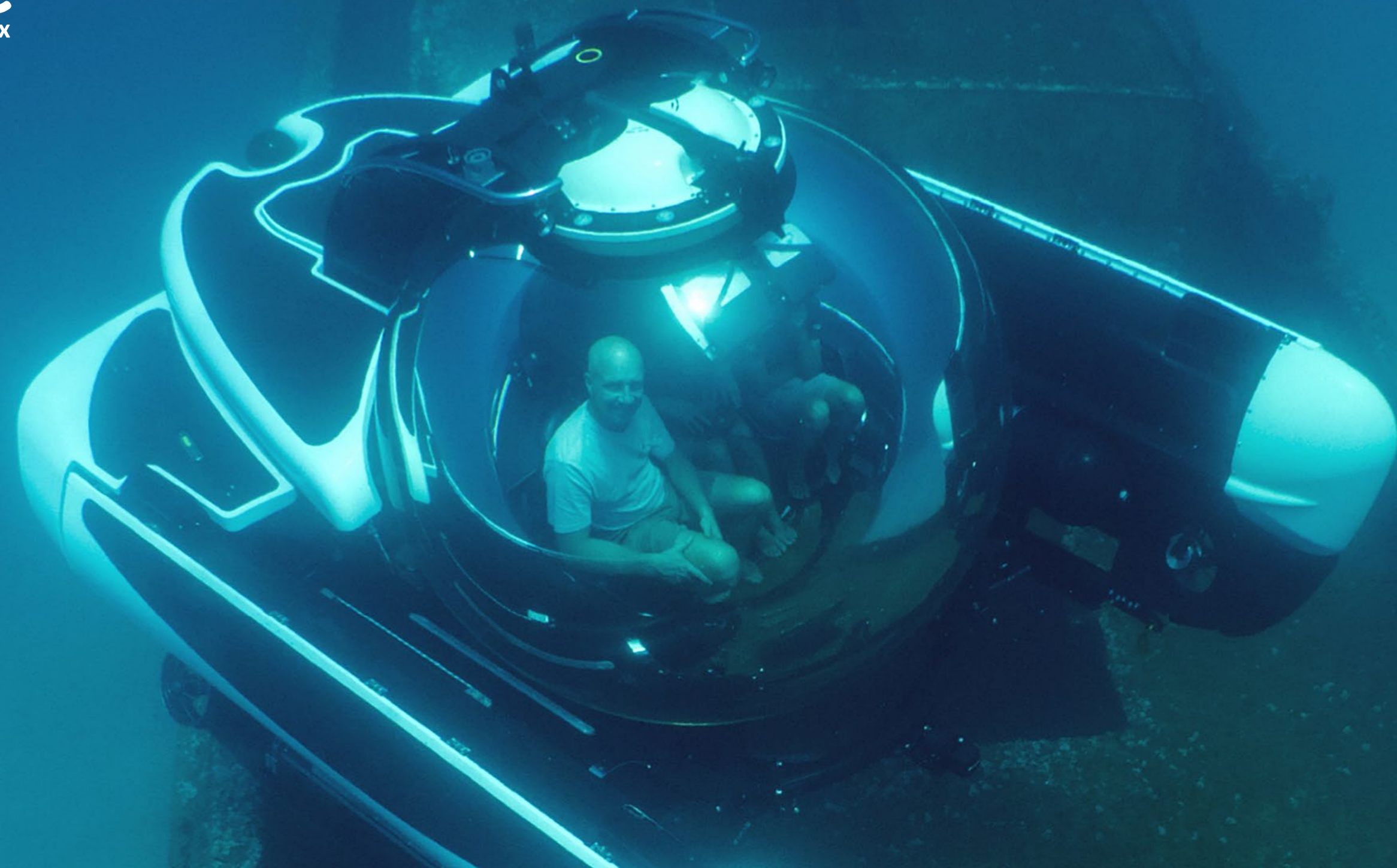
Specifications Cruise Sub 7 - 300		
Occupants	Pilot	1
	Passengers	6
Depth-rating	300 meters	
Dimensions	419 x 315 x 239 cm	
Weight	9,500 kg	
Lifting points	4 lifting points	
Certification	DNV-GL	
Endurance	Up to 12 hours	
Battery type	Lithium-ion	
Underwater speed	2.5 knots	
Surface speed	2.5 knots	

Specifications Cruise Sub 7 - 1140		
Occupants	Pilot	1
	Passengers	6
Depth-rating	1,140 meters	
Dimensions	481 x 344 x 255 cm	
Weight	11,500 kg	
Lifting points	4 lifting points	
Certification	DNV-GL	
Endurance	Up to 12 hours	
Battery type	Lithium-ion	
Underwater speed	2.5 knots	
Surface speed	2.5 knots	

Specifications Cruise Sub 9 - 200		
Occupants	Pilot	1
	Passengers	8
Depth-rating	200 meters	
Dimensions	499 x 355 x 260 cm	
Weight	14,000 kg	
Lifting points	4 lifting points	
Certification	DNV-GL	
Endurance	Up to 12 hours	
Battery type	Lithium-ion	
Underwater speed	2.5 knots	
Surface speed	2.5 knots	

CRUISE SUB

The Cruise Sub range makes it possible to dive with five or more people while everyone gets the best view. The double ended design ensures that even when you dive with the nine-person Cruise Sub everyone will get the same intimate and panoramic experience. The large acrylic spheres virtually disappear under water giving the impression of being suspended in the sea. Each acrylic sphere also features an interior that can rotate so that everyone always has the best view. Moreover, this model features rotating thrusters providing very precise and efficient control of the submersible in every direction. This unique design comes in different configurations; dive with five, seven or nine passengers, or choose for different depth-ratings with a maximum depth of 1,140 meters.



PERFORMANCE UNDER PRESSURE

We thought of every aspect of a dive operation while designing our submersibles. This ensures that you get the best submersible experience available in the world. During a dive you will have the best view possible while enjoying unparalleled comfort. You will have the technology that serves you with accurate control and total freedom to go anywhere so you can focus on what is out there. You need simple and smart solutions that make owning a submersible an effortless pleasure and performance that lasts until you are finished exploring. You don't want to wait before you can start diving. Your submersible should always be ready for your mission, not just now but also in the future. You want to feel safe every step of the operation; during launching, boarding, diving and recovery. These are the standards you get with a U-Boat Worx submersible.

Visit our website to find out more: www.uboworx.com

- **The safest and most reliable**
- **Unparalleled comfort**
- **Best view**
- **Unrivalled intuitive controls**
- **Ready for any mission; today and in the future**
- **Unmatched boat-like handling and surface capabilities**
- **Stress-free launch & recovery**
- **Always ready to dive**
- **Longest endurance**
- **Dive anywhere to the maximum depth**
- **Smartest engineering solutions**
- **Highest manoeuvrability and speed**

“our team would be happy to assist you with discussing the suitability of our submersibles for your personal subsea aspirations.”

