

*Diving Made Easy...*



[www.YachtDiver.com](http://www.YachtDiver.com)



[www.YachtDiver.com](http://www.YachtDiver.com)



# NEMO

## The World's Smallest Dive System



NEMO is an incredibly compact Surface-Supplied Air (SSA) dive system that supports one diver to ten feet – the perfect way for snorkelers to take their adventures beyond the surface.

### Specs:

1 Diver - 10 feet

Run time: 60+ minutes

Size: 11" x 7.5" x 8"

Weight: ~10 lb.



### Who is NEMO for?

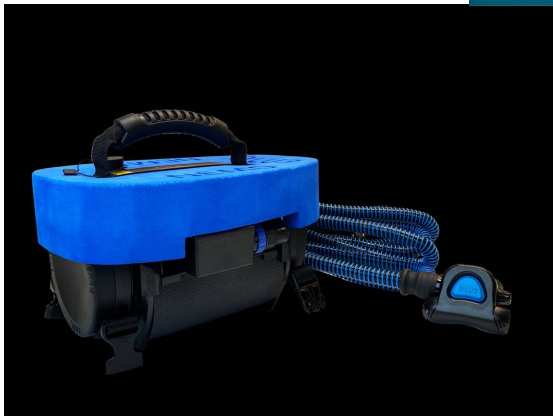
Whether you're an ocean explorer, poolside parent, treasure hunter, underwater photographer, self-sufficient boat owner, or in search of the latest yacht toy – NEMO is for you.

### How does it work?

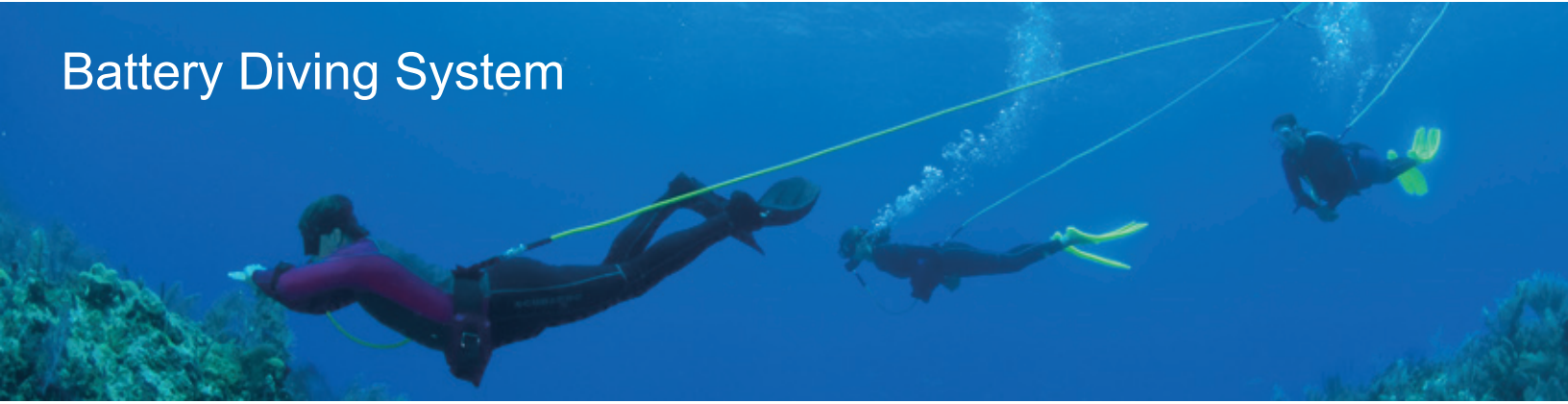
Inside NEMO's buoyant foam and tube is a custom battery-powered air compressor.

The compressor pumps air to the diver through the 10 foot hose and out through NEMO's patented smart regulator, all powered by a single battery.

Our smart regulator saves battery life by monitoring breathing patterns to let the compressor know exactly when it needs to send air, which means NEMO doesn't just push air to you, but rather breathes with you.



# Battery Diving System



## **SEA LION - 3 HOUR + Floating Hookah, 2 diver package.**

Our new Variable Speed (VS) technology has resulted in the world's first floating battery-powered hookah systems capable of supporting multiple divers to recreational depths for over an hour! Divers and boaters who prefer not to store and handle gasoline now have a cleaner and greener option for hookah.

Brownie's proprietary Variable Speed technology constantly adjusts the compressors speed to met the divers demand for air. During low demand, the compressor speed is reduced, conserving battery power. During high demand, the speed increases to provide a maximum volume of air to the divers.

**THE SEA LION HAS THE PERFORMANCE OF THE GASOLINE POWERED SYSTEM - WITHOUT THE FUEL!**



### **The NEW SEA LION features:**

Power: .75 hp sealed DC motor powered by (1) 24V / 63.8 amp-hour

Lithium Ion Battery Compressor: Single Head Direct Drive Oilless

Run time: Up to 3+ hours available

Maximum Depth Selector: Dial in your Depth to Determine estimate dive time.

Depth: 2 divers to 65 ft and 3 divers to 35 ft\* and 4 dives to 15-20 ft\* (with the purchase of the add-a-diver kit\*)

Weight: Unit only 33lbs, battery 22lbs, gear bag 35lbs

Dimensions in Storage Case: 17 L x 24 W x 14 H (inches)

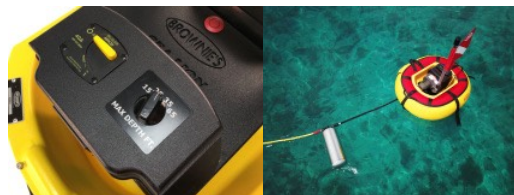
\*With the purchase of an Add-A-Diver kit

System includes:

#### **QTY**

#### **ITEM**

- 1 24VT LITHIUM ION battery w/ custom terminals 1 Battery Charger / 110V/220V compatible
- 1 2.5 Gallon Accumulator tank
- 1 60 ft common down line with QRS fittings
- 2 20ft individual diver hoses with QRS fittings
- 2 Brownie's™ hookah regulators
- 2 Brownie's™ patented Drop Weight Cummerbelts™ 1 Intake staff w/dry top
- 1 Dive flag
- 1 Float tube
- 1 QRS Y-Divider
- 1 Deluxe mesh duffle gear bag
- 1 Owner's Manual





## Build A Brownie's Built-in Boat Diving System

At the factory, at Boat Shows and on the beach people are always making suggestions as to how to make a better Brownie's System - and we have listened. What we've heard is that everyone has their own diving needs. Now, Brownie's has come up with a way you can build your very own custom Brownie's Built-in Boat Diving System.

	EC1 Diving System	EC2 Diving System	VS0 Diving System	VS1 Diving System
<b>Description</b>	Electric	Electric	Variable Speed Battery Powered	Variable Speed Battery Powered
<b>Power Supply</b>	115/60 OR 220/60 Also available in 50Hz	115/60 OR 220/60 Also available in 50Hz	Power supply not included, 24 vdc compatible	Includes 2 PC925 Odyssey batteries, Recharges from engines alternators
<b>Electric Motor</b>	.75 HP	1.5 HP	.75 HP	.75 HP
<b>Diver Capability</b>	1-2 Divers	2-3 Divers	2-3 Divers	2-3 Divers
<b>Weight</b>	49 lbs	54 lbs	22 lbs	82 lbs
<b>Dimensions</b>	12 x 17 12.5 in	12 x 17 x12.5 in	18.5 x 13 x 11	18.25 x 15.75 x 12.5
<b>Run Time</b>	CONTINUOUS RUN based on power availability	CONTINUOUS RUN based on power availability	CONTINUOUS RUN based on power availability	60-90 min. average, depending on diver demand
<b>Downline available in:</b>	60, 100 and 150 ft	60, 100 and 150 ft	100 ft included in standard package	100 ft included in standard package
<b>Accumulator Tank Required</b>	Yes	Yes	No	No
<b>E-Reel Compatible</b>	Yes	Yes	Yes	Yes



### Electric Hookah Diving System

Brownie's Portable Electric Hookah systems can be used wherever consistent electric service is available. These systems are ideally suited for inspection and maintenance applications, but can also be used for recreational diving. The standard configuration is compatible with 110vac electric service – 220vac and 50Hz configurations are also available.



#### E150X Features:

- .75 HP TEFC motor (115vac, 60 Hz, single phase)
- Single head direct drive oil-less compressor
- One diver to 60ft
- Dimensions: 17"L x 24"W x 17"H
- Weight: 48 lbs

#### E250X Features:

- 1.5 HP TEFC motor (115vac, 60 Hz, single phase)
- Dual head direct drive oil-less compressor
- Two divers to 60ft
- Dimensions: 17"L x 24"W x 17"H
- Weight: 70 lbs



#### The E150X system for 1 diver includes:

.75 HP TEFC electric motor/single head direct-drive compressor assembly, an impact resistant pan with storage cover, 5ft heat hose with in-line particle filter, (1) 60ft down line with QRS fittings, (1) Brownie's Hookah regulator on 40in hose, (1) Brownie's Drop Weight Cummerbelt™ and Brownie's deluxe mesh gear bag.

#### The E250X system for 2 divers includes:

1.5 HP TEFC electric motor/twin head direct-drive compressor assembly, an impact resistant pan with storage cover, 7ft heat hose with in-line particle filter, (1) 60ft down line with QRS fittings, (1) QRS Y-divider, (2) 20ft diver hoses with QRS fittings, (2) Brownie's Hookah regulators on 40in hose, (2) Brownie's Drop Weight Cummerbelts™ and Brownie's deluxe mesh gear bag.



# Gasoline Powered Diving Systems

Brownie's Floating Hookah Diving Systems offer the freedom to dive when and where you want without the use of conventional scuba equipment. By replacing bulky scuba tanks and traditional buoyancy compensators with Brownie's Drop Weight Cummerbelts™ and float-mounted compressor, divers can enjoy hours of fun exploring the underwater world.



## F285X & F390X Deluxe Hookah Diving System

The Explorer F285X and F390X systems are equipped with Subaru's 4.5hp 4-cycle OHV gasoline engine and Brownie's special Direct Drive compressor. The F285X single head compressor supports 2 divers to a maximum depth of 80ft. The F390X twin head compressor has double volume, supporting 3 divers to a maximum depth of 90ft. Both systems provide run times in excess of 3 hours on a single tank of fuel.



### F285X Features:

- Single head direct drive oil-less compressor
- Subaru 4.5 HP engine
- Set up for 2 divers
- Dimensions: 17"L x 24"W x 14"H
- Weight: 50 lbs

### F390X Features:

- Twin head direct drive oil-less compressor
- Subaru 4.5 HP engine
- Set up for 3 divers
- Dimensions: 17"L x 24"W x 14"H
- Weight: 58 lbs

### The F285X system for 2 divers includes:

Subaru engine/compressor assembly in an impact resistant pan with storage cover, 5ft heat hose with in-line particle filter, Dry-top intake staff and dive flag, deluxe float tube, (1) 60ft down line with QRS fittings, (1) QRS Y-divider, (2) 20ft diver hoses with QRS fittings, (2) Brownie's Hookah regulators on 40in hose, (2) Brownie's Drop Weight Cummerbelts™ and Brownie's deluxe mesh gear bag.

### The F390X system for 3 divers includes:

Subaru engine/compressor assembly in an impact resistant pan with storage cover, 5ft heat hose with in-line particle filter, Dry-top intake staff and dive flag, deluxe float tube, (1) 60ft down line with QRS fittings, (2) QRS Y-divider, (3) 20ft diver hoses with QRS fittings, (3) Brownie's Hookah regulators on 40in hose, (3) Brownie's Drop Weight Cummerbelts™ and Brownie's deluxe mesh gear bag.



## F285BE Economy Hookah Diving System

Our most economical gas-powered floating hookah system, the F285BE provides hours of diving excitement at the best price possible.

### F285BE Features:

- Single head direct drive oil-less compressor
- Briggs & Stratton 4.0 HP engine
- Set up for 2 divers
- Dimensions: 17"L x 24"W x 14"H
- Weight: 48 lbs

### The F285BE system for 2 divers includes:

Briggs & Stratton engine/compressor assembly in an impact resistant pan with lid, 5ft heat hose with in-line particle filter, Dry-top intake staff and dive flag, deluxe float tube, (1) 60ft down line with QRS fittings, (1) QRS Y-divider, (2) 20ft diver hoses with QRS fittings, (2) Brownie's Hookah regulators on 40in hose, (2) basic diver towbelts, mesh gear bag.



**Add-A-Diver kit available for all of our Gasoline powered systems.**

# Mini Scuba Egressor™ System

Our patented Egressor™ systems ride along in a handy sleeve in the small of your back; out of the way, yet always convenient. It's also perfect for quick response for items dropped over-board, verifying anchor location, hull inspection, prop clearing, pool maintenance, and much more!



## Mini Scuba Egressor™ Features:

- Brownie's™ patented Drop Weight Cummerbelt™ with retention sleeve
- Choose between 6 cu. ft. sleeve and tank for the average diver or a full 13 cu. ft. for the serious explorer
- Mini Scuba Egressor™ bottle, scuba valve and gauge
- Brownie's hookah regulator and retaining necklace
- Fill adapter provided for convenient filling from a large scuba cylinder

Scuba certification may be required to have Egressor™ tanks refilled at professional dive facilities.

## Other products available by Brownie's



With Brownie's Kayak Diving Hose Kits you can leave your tank topside and move about freely and effortlessly as the hose glides behind you – out of sight and out of mind. Hose kits available from 20ft thru 150ft.



The commercial series is the choice of professionals around the world. With the dependable 4-cycle OHV gasoline engine and direct drive compressors these units are ready for extended work days.



Add the E-Reel™ upgrade package to your boat hookah system to create the ultimate diving system. Brownie's level-winding Glendinning™ hose reel recoils 150ft of diver hose at the push of a button. Also includes a stainless steel hull hawse fitting for easy access.



Add an additional diver to many of our Brownie's systems with an Add-A-Diver Kit. Includes (1) 20 ft diver hose, (1) Drop Weight Cummerbelt™, (1) Y-Divider and (1) hookah regulator and whip.



The new Brownie's facility in Pompano Beach, FL offers the entire line of Hookah Diving systems and a complete service center for repairs, annual maintenance and parts. At Brownie's Third Lung, our friendly staff is here to assist you!



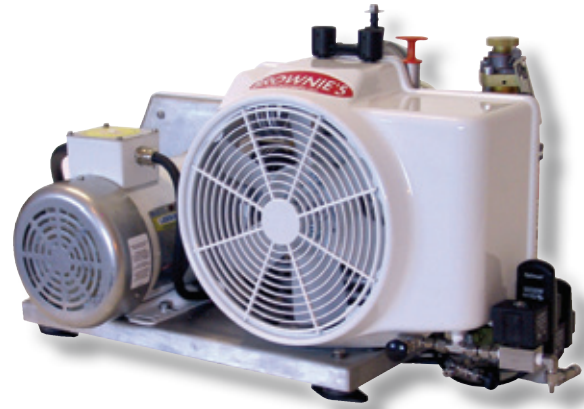
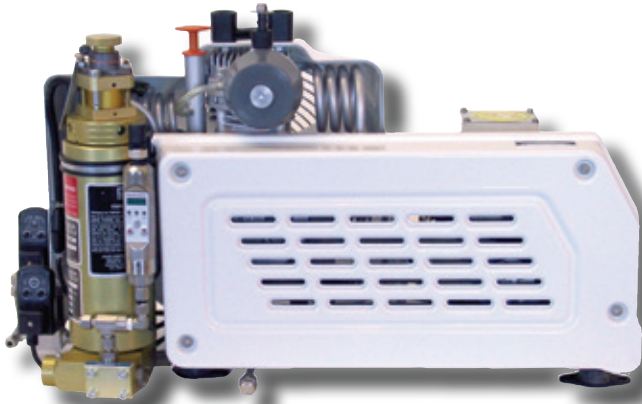
Made in the USA, Brownie's uses only the most durable marine fabric to ensure a longer lasting product. Please check our entire line of gear bags, backpacks, snorkel bags and more!



# YACHTPRO™ Series Compressors

The Light Duty YachtPro™ compressors are designed to support groups of 2-4 divers for recreational use, filling up to four tanks simultaneously. These compressors offer small boat owners all the convenience and automated performance of our larger compressor systems, but in a very compact package. Simply attach the tanks, start the compressor and come back later to tanks that are precisely filled and ready to go. The YP25 is available in single (SF) or dual (DF) filter models to meet various needs.

## YP25



YP25 is now available in 115vac and 230vac configurations!



	YP25SF-U	YP25DF-M	YP45DF-M	YP55DF-M	YP75DF-M	YP135
<b>Description</b>	Our smallest and most affordable fully automated HP compressor	Our most popular automated compressor system for private use - great for diving enthusiasts, recreational divers and small groups	Excellent medium duty automated compressor system - our smallest compressor rated for continuous duty	Heavy-duty automated compressor system for advanced diving applications	Heavy-duty automated compressor system for advanced diving applications	Marinized workhorse suitable for commercial/expedition applications
<b>Displacement (cfm)</b>	3.2 FAD 3.9 charge rate on 230vac service	3.2 FAD 3.9 charge rate on 230vac service	4.1 FAD 4.9 charge rate	5.0 FAD 6.0 charge rate	7.0 FAD 8.4 charge rate	10.8 FAD 13.0 charge rate
<b>Fill Time*</b>	22 min on 230vac 30 min on 110vac	22 min on 230vac 30 min on 110vac	16 min	13 min	9 min	5 min
<b>Electric Motor</b>	2hp TEFC	2hp TEFC	5hp TEFC	5hp TEFC	7.5hp TEFC	10hp TEFC
<b>Compatible incoming power, standard configuration</b>	100-130vac, 60hz, 1ph or 208-230vac, 50/60hz, 1ph	100-130vac, 60hz, 1ph or 208-230vac, 50/60hz, 1ph	208-230vac, 50/60hz, 1 or 3ph	208-230vac, 50/60hz, 1 or 3ph	208-230vac, 50/60hz, 1 or 3ph	208-230vac, 50/60hz, 1 or 3ph
<b>Max Amp Draw (including start-up)</b>	23.0 on 115v, 60hz, 1ph <16.0 on 230v, 60hz, 1ph	<23.0 on 115v, 60hz, 1ph <16.0 on 230v, 60hz, 1ph	<25.0 on 230v, 60Hz, 1ph <12.5 on 230v, 60Hz, 3ph	<25.0 on 230v, 60Hz, 1ph <12.5 on 230v, 60Hz, 3ph	<48.0 on 250v, 60Hz, 1ph <24.0 on 230v, 60Hz, 3ph	<64.0 on 230v, 60Hz, 1ph <34.0 on 230v, 60Hz, 3ph
<b>Minimum Gen Set</b>	3.5kw 120vac 1ph 60hz 3.8kw 230vac 1ph 60hz	3.5kw 120vac 1ph 60hz 3.8kw 230vac 1ph 60hz	8kw 208-230vac 1ph 6kw 208-230vac 3ph	8kw 208-230vac 1ph 6kw 208-230vac 3ph	12.5kw 208-230vac 1ph 8kw 208-230vac 3ph	17kw 208-230vac 1ph 9kw 208-230vac 3ph
<b>BTU/HR</b>	5,576	5,576	13,940	13,940	20,865	27,880
<b>Duty Cycle</b>	2 hours (45 min rest between cycles)	2 hours (45 min rest between cycles)	Continuous (suitable for banks up to 5000psi)	Continuous (suitable for banks up to 5000psi)	Continuous (suitable for banks up to 5000psi)	Continuous (suitable for banks up to 6000psi)
<b>Filtration</b>	3,200 cuft @ 68°F	15,000 cuft @ 80°F	15,000 cuft @ 80°F	15,000 cuft @ 80°F	15,000 cuft @ 80°F	47,000 cuft @ 68°F
<b>Fill Assembly</b>	Single 6ft fill whip	4-way fill manifold	4-way fill manifold	4-way fill manifold	4-way fill manifold	custom





## **Brownie's Yachtdiver Stores**

**[info@yachtdiver.com](mailto:info@yachtdiver.com)**

Southport Divers  
1530 Cordova Rd  
Fort Lauderdale, FL 33316  
954-524-2112

Yacht Toys  
2301 S. Federal Hwy  
Fort Lauderdale, FL 33316  
954-463-9446

Palm Beach Divers  
3619 Broadway  
Riviera Beach, FL 33404  
561-844-3483